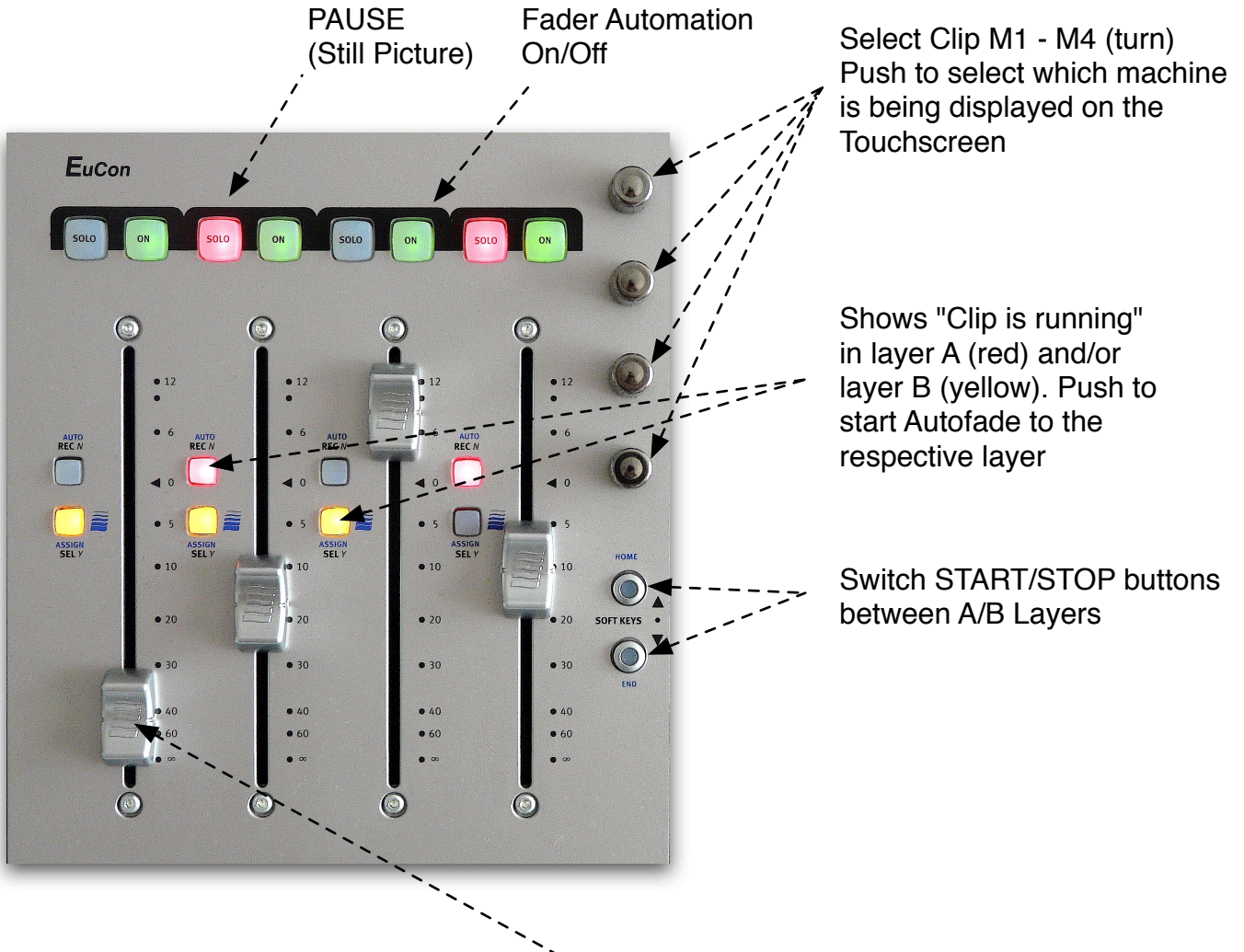


# Euphonix MC Control Remote for TH-S VideoEngine3D





## Fader Section



Four touch sensitive faders, interrupt Autofade when touched. Operation of jog-wheel and buttons around it correspond to the last touched fader (or started/stopped machine, see next pages).

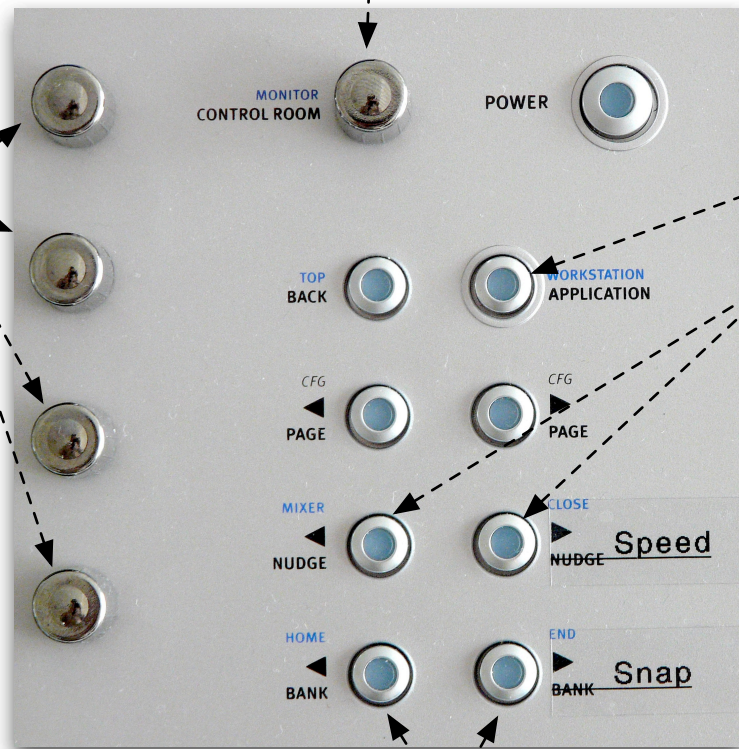
## Knob Section

Master Volume, needs installation of Euphonix SME (see below)

Change Effects Parameter for the four main screens (turn), push to reset to zero.

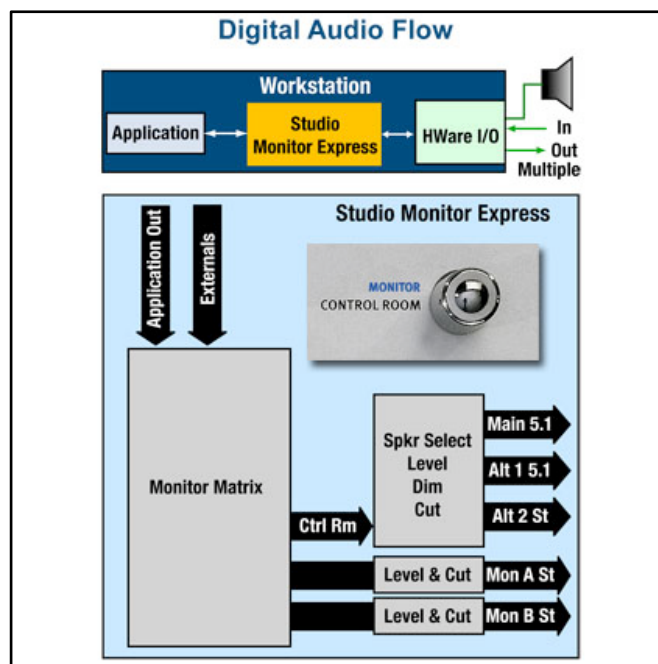
Toggle Applications

Increase/Decrease speed of last selected movie (push both simultaneously for original speed)

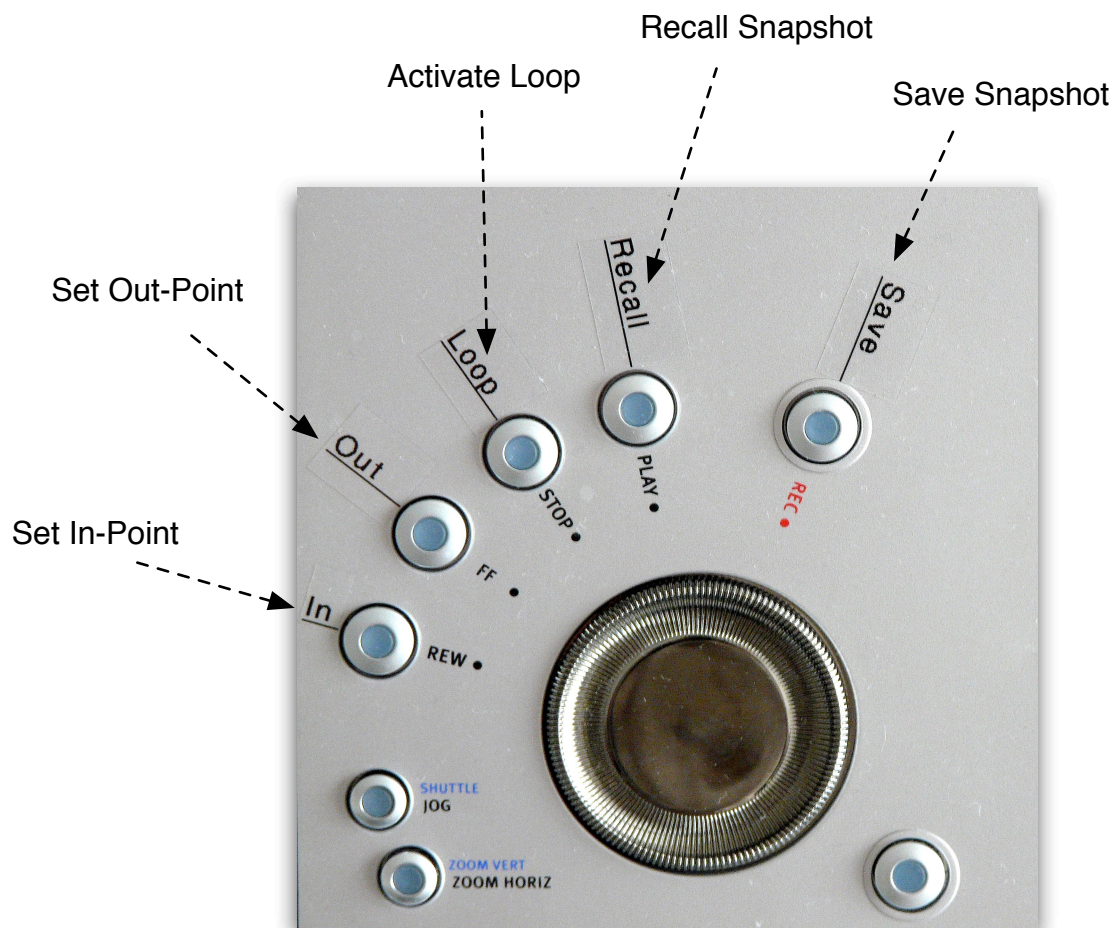


Increase/Decrease Snapshot

## Euphonix SME



## Jog-Wheel Section



Select start/stop/loop points of the last selected Machine (layer A) via Jog-Wheel

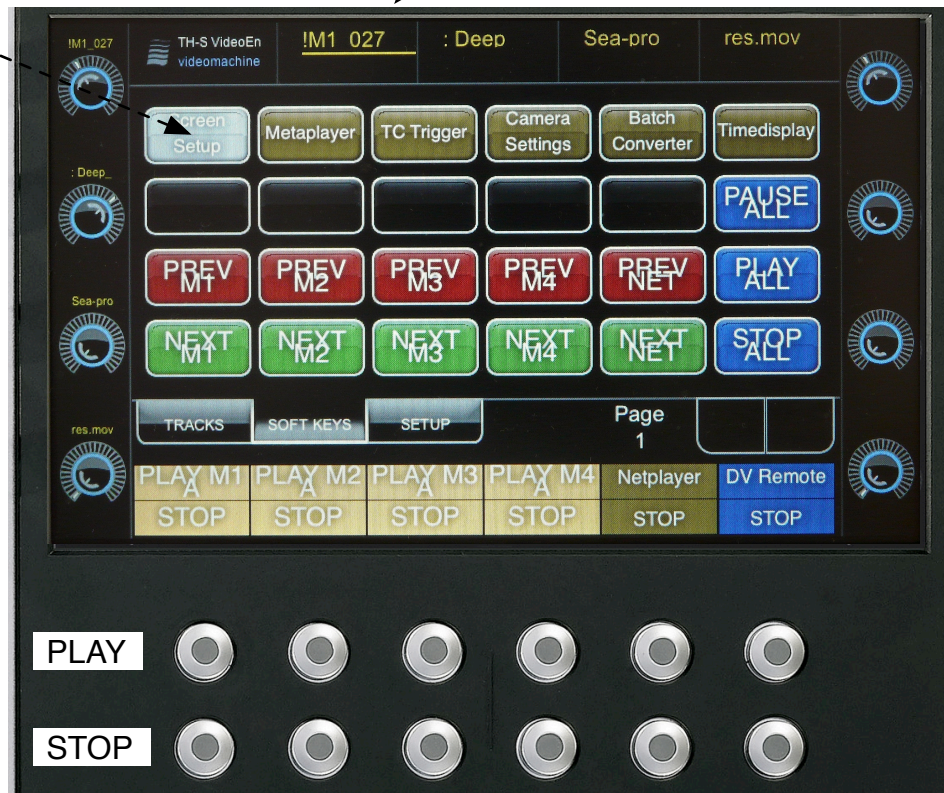


## Touch Screen Section

Shows current clip name of selected Machine (layer A).  
The "!" character in front signals that looping is active for this clip.

The top row opens the corresponding window on the monitor.

Depending which layer was chosen these buttons trigger START/STOP for the respective layer.



With the Euphonix Editor one is able to define arbitrary key commands and pages to control TH-S VideoEngine3D. The default page is shown in this picture.